

CASE STUDY

YTO DRAGON GROUP, SHANGHAI: THE BASIS FOR INNOVATION

In YTO's new data centre an IT infrastructure solution from Datwyler forms the foundation for many of the group's innovative projects. A preassembled OM4 fibre optic system supports 10G, 40G, 100G and higher transmission rates.

In 2019 Datwyler was awarded the contract to cable the new data centre of the Shanghai YTO Dragon Group. The "Phase I Project" was implemented at YTO head office in the Shanghai district of Qingpu. The client was YTO Technology, a group subsidiary.

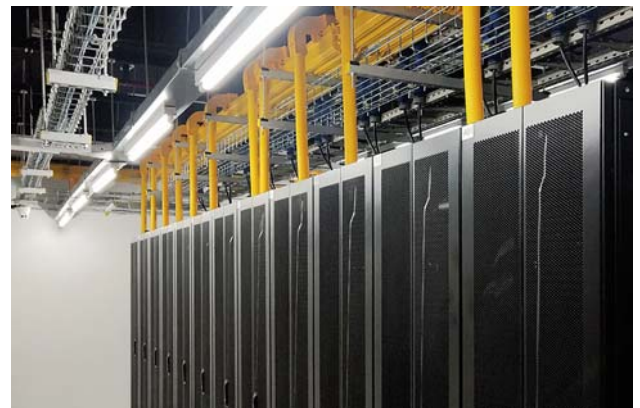
The group comprises several innovative firms. YTO Express, for example, with over 130 transit centres and around 70,000 customer service facilities throughout China, is one of the top 3 express delivery service providers in the country. Other companies in the group are involved in air freight, new technologies, new retail, coordinated development and other sectors.

Tier 3 data centre

YTO is active in driving forward scientific and technological innovation – for the benefit of its own companies and that of customers. This is the reason why at its head office in Qingpu YTO Technology has launched a data centre project to be used for developing intelligent solutions for the group and the entire logistics sector.

Over 800 skilled personnel are involved in research and de-velopment, operation and maintenance. YTO is investing more than 50 million renminbi (6.3 million euros) annually in the new Tier 3 data centre.

For the data centre Datwyler is supplying a preassembled OM4 fibre optic system with MTP connection technology which supports 10G, 40G, 100G and higher transmission rates, as well as a copper cabling system comprising 8000 shielded links suitable for 10G. Datwyler's data centre solutions are not only cutting-edge, but are also easy to use, reliable, flexible and cost-effective.



The use of different colours means that the subsystem and installed links are easily distinguishable.

Foundation for numerous projects

Datwyler's solutions meet all YTO's technical requirements: in the data centre they serve as the basic infrastructure for future optimisation projects, for perfecting the core system, and for an automatic monitoring platform.

In addition they enable all-round visualisable and controllable company operations and the comprehensive use of Internet applications, IoT, Big Data and other progressive technologies.

The project has added to Datwyler's experience in China. This helps towards being able to supply customers in future with advanced, reliable, robust and flexible IT infrastructure solutions which meet their requirements and incorporate technological innovation.

(September 2020)