

## CASE STUDY

# ELISABETHENPARK, LUCERNE: PIONEERING RESIDENTIAL PROJECT

For future-oriented living in old age the ElisabethenPark has equipped all its new buildings with a communications network from Datwyler.

In early 2023 the ElisabethenPark was completed in the Bruchmatt quarter of Lucerne. Three new buildings designed to meet the future requirements of the elderly were erected on a site of around 7300 square metres near the centre of town. They house an 85-bed nursing home, 37 apartments – with and without support services – as well as communal lounges, a bistro, a “quiet room” and three event spaces. There are plans for a dental laboratory and dental practice. Between the apartment buildings there is an inviting central leafy square for sitting and relaxing. A petanque piste can be used as a meeting place for those who enjoy playing.

In late January 2023 the residents of the previous Elisabethenheim in Oberhochbühl, run by the Lucerne Nursing Association, were able to move into the new ElisabethenPark.

### Fast, reliable communications network

After a development and planning period of around six years the construction work on the apartment buildings started in February 2021. The contract for the installation of the communications network in the buildings was



awarded to Maréchaux Elektro AG Luzern, an experienced electrical and IT service provider and one of Datwyler IT Infra's certified Solution Partners.

Maréchaux commissioned Datwyler to supply the entire communications cabling system. This is a Class E<sub>A</sub> network containing 520 links. It comprises 26 kilometres of type CU 7060 4P copper data cable which – in accordance with Cantonal Fire Insurance Association requirements – conforms to CPR Class D<sub>ca</sub>-s2, d1,a2. In addition there are 1700 Category 6<sub>A</sub> KS-T Plus modules and 50 KS-24x patch panels.

This Datwyler solution allows Elisabethen-Park to keep pace with the steadily rising transmission rates and to make use of the full performance capability of the whole network. In this respect it provides high investment security for the future.

For the fibre optic cabling a trunk solution with single-mode fibres was decided on, pre-terminated at one end. In order to ensure the quality Datwyler had already as-





sembled the connectors and measured the cables by means of OTDR prior to delivery. On the construction site the trunk cables were terminated onto 21 type OV-S and OV-CH splice and breakout boxes.

Datwyler also supplied nine Premium wall-mount racks for the sub-distributors on the floors, and four passively ventilated network racks for the main distribution board in the basement.

### All services integrated

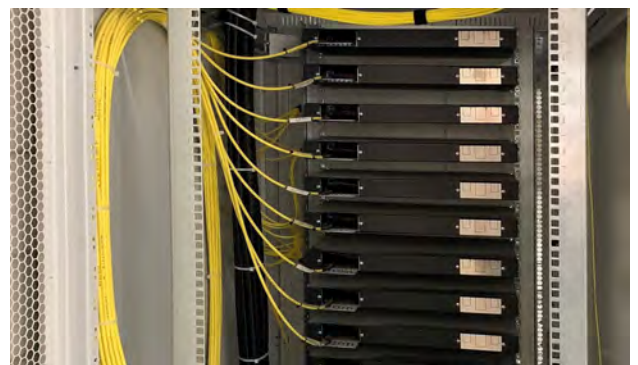
Today all the services of the internal network are integrated in the communications network, including the telephone service, video cameras and the technical installations such as heating, ventilation and air conditioning. In addition to this there is a guardian angel sys-

tem which triggers a message should a disorientated resident leave the nursing home without being noticed.

### Everything from one source

Throughout the project Datwyler collaborated closely with the Maréchaux team, ensuring that delivery dates were always met – despite difficult conditions and supply shortages due to the COVID-19 pandemic. Professional technical consultation played a part in this collaboration before and during the installation phase.

With its modern reliable communications cabling Datwyler is making a major contribution to the future-oriented IT infrastructure set-up of the ElisabethenPark residential project.



(August 2023)