

Datwyler System Circuit Integrity cabling, E30–E60 / E90, in accordance with STN 92 0205

Similar to ČSN 73 0895 and DIN 4102-12



Datwyler type SAS single clamp

Art. No.:	Type	Ømm	PU/pcs.
1300016	SAS 6 D	5-6	100
1300017	SAS 8 D	7-8	100
1300018	SAS 10 D	9-10	100
1300019	SAS 12 D	11-12	100
1300020	SAS 14 D	13-14	100
1300021	SAS 16 D	15-16	100
1300022	SAS 18 D	17-18	100
1300023	SAS 20 D	19-20	100
1300024	SAS 22 D	21-22	100
1300025	SAS 24 D	23-24	100
1300026	SAS 26 D	25-26	100
1300027	SAS 28 D	27-28	100
1300028	SAS 30 D	29-30	100
1300251	SAS 38 D	29-38	25
1300252	SAS 47 D	38-47	20
1300234	SAS 55 D	47-55	20
1300250	SAS 60 D	55-60	20

Datwyler type SAS single clamp, pre-assembled with fire protection plug

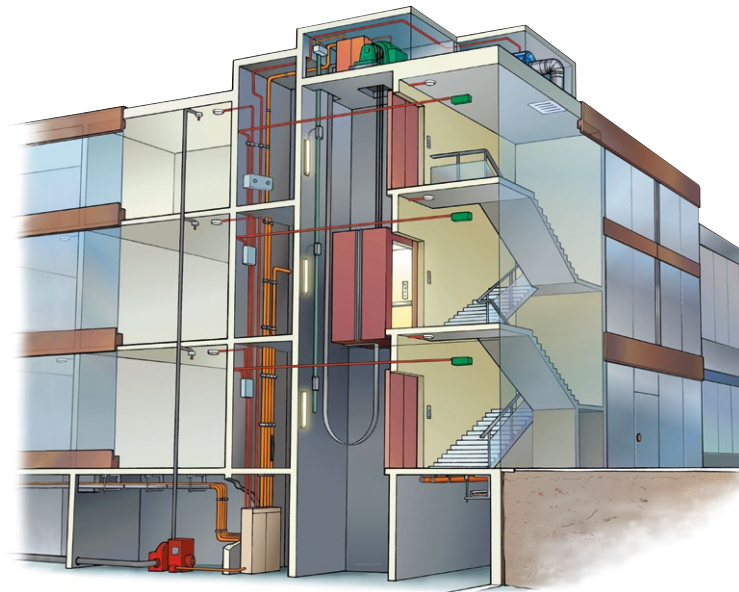
Art. No.:	Type
1300956	SAS 8 D - K6x5 S
1300957	SAS 12 D - K6x5 S
1300958	SAS 14 D - K6x5 S
1300959	SAS 16 D - K6x5 S

Single clamp - type SAS accessories for concrete:

Datwyler	
	Plug set, 200 pcs., with SDS1 drill bit
Art. No.:	Type
1300953	Plug set K6x5 S
	Accessorie: drill bit
Art. No.:	Type
1300962	SDS1 drill bit
	Accessorie: setting tool
Art. No.:	Type
1300963	SMu 6 SM setting tool

Mounting screws for red bricks and lime-sand bricks:

	Stair bolt, 100 pcs., for brickwork
Art. No.:	Type
3800097	MMS+ St 6/55



Datwyler WUM support measure for vertical cable installation

Art. No.:	Type
1301276	WUM 300 E30 100 x 370 x 135 mm
1301278	WUM 400 E30 100 x 470 x 135 mm
1301277	WUM 500 E30 100 x 570 x 135 mm
1301275	WUM 300 E90 200 x 470 x 185 mm
1301274	WUM 400 E90 200 x 570 x 185 mm
1301273	WUM 500 E90 200 x 670 x 185 mm

Datwyler Keram low-voltage cable, E30 – E60 / E90 B2_{ca}-s1a,d1,a1

	with protective earth conductor (gn/ye) (N)HXH-FE180 E30-E60 / E90 B2 _{ca} -s1a,d1,a1
	with concentric protective conductor (N)HXH-FE180 E90 B2 _{ca} -s1a,d1,a1

Niedax Cable Tray RLV 60..., Bracket KTAS... and pendant HU 5050/..., ≤ 1.5 m support span, ≤ 20 kg/m load



Niedax Cable Ladder STL 60..., for horizontal and vertical installation, ≤ 1.2 m support span, ≤ 20 kg/m load



Strap clamp, E30 – E90

Art. No.:	Type	Ømm	PU/pcs.
1300043	B12D	6-12	100
1300044	B14D	10-14	100
1300045	B16D	12-16	100
1300046	B18D	14-18	100
1300047	B22D	18-22	100
1300048	B26D	22-26	100
1300049	B30D	26-30	100
1300050	B34D	30-34	100
1300051	B38D	34-38	100
1300052	B42D	38-42	100
1300053	B46D	42-46	100
1300054	B50D	46-50	50
1300055	B54D	50-54	50
1300056	B58D	54-58	50
1300057	B64D	58-64	50
1300058	B70D	64-70	50
1300059	B76D	70-76	50
1300060	B82D	76-82	50
1300061	B90D	82-90	50
1300062	B100D	90-100	25
1300063	B110D	100-110	25

C-shaped rail

Art. No.:	Type	PU/pcs.
1300064	2970/2 SLD	1 pc = 2m

Datwyler multi cable support with plugs Hermann clamp

Art. No.:	Type
3800206	Hermann clamp
3800200	Hermann clamp S

Datwyler E0 multi-cable support
in accordance with MLAR 02/2015 3.5.3

Art. No.:	Type	PU/pcs.
3800086	E0 multi-cable support	25
3800087	E0 S multi-cable support	50

Strap clamp / Hermann clamp accessories:

	Datwyler plug set, 200 pcs., with SDS1 drill bit
Art. No.:	Type
1300954	KDM plug set
	Accessorie: drill bit
Art. No.:	Type
1300962	SDS1 drill bit
	Accessorie: setting tool
Art. No.:	Type
1300860	SWM-SM50 setting tool

Mounting screws for red bricks and lime-sand bricks:

	Panhead screw, 100 pcs., for masonry
Art. No.:	Type
38000980ZX	MMS+ P 6/40 for Multicable support

Note: Washers M8 DIN 125 (Art. No. 38000990ZX) are required for profile rail mounting.

Datwyler System Circuit Integrity cabling, E30–E60 / E90, in accordance with STN 92 0205

Similar to ČSN 73 0895 and DIN 4102-12



INSTALLATION / LAYING TECHNIQUES



Datwyler Keram (N)HXH FE180 E30-E60 B2_{ca}-s1a,d1,a1 (all dimensions)
STN 92 0205 FIRES-JR-130-22-NURE
ČSN 73 0895 FIRES-JR-131-22-NURE

Standard construction	Classified for horizontal and vertical installation		
	PS 45 / P 45 R	PS 60 / P 60 R	PS 90 / P 90 R
Single clamp	300 mm	300 mm	
Strap clamp on c-shaped rail or cable ladder	300 mm	300 mm	300 mm

Datwyler fastener also in tubes acc. to STN 92 1101-1 7.6	Classified for horizontal and vertical installation		
	PS 45 / P 45 R	PS 60 / P 60 R	PS 90 / P 90 R
Datwyler single clamp type SAS, bundle with up to 3 cables	300 mm	300 mm	
Datwyler strap clamp B...D on c-shaped rail, bundle with up to 3 cables	600 mm	600 mm	600 mm

Datwyler fastener	Classified for horizontal installation	
	PS 45 / P 45 R	
Datwyler Hermann clamp	1.20 m	6 kg/m

Datwyler fastener	horizontal vertical	According to DIN 4102-12:1998-11 (P-MPA-E-03-043) comment
		Datwyler single clamp type SAS, bundle with up to 3 cables
Datwyler strap clamp B...D on c-shaped rail, bundle with up to 3 cables	E30 1.2 m E60 80 cm	
In-wall installation	E30 - E60	Cable to be covered with ≥ 15 mm thick layer of mineral plaster, parallel installation of multiple cables

Datwyler fastener	horizontal	According to DIN 4102-12:1998-11 (P-MPA-E-03-043) comment
		Datwyler Hermann clamp S (small)
Datwyler Hermann clamp	E30 80 cm E60 80 cm	maximum 6 kg/m

G-duct 50 x 75 mm (Lanz)	E30 1.25 m	G-duct with G-post or with hooked rail, maximum 3 kg/m, up to 16 mm ²
--------------------------	------------	--

G-duct ≤ 75 x 100 mm (Lanz)	E30 1.25 m	G-duct with G-post or with hooked rail, maximum 7.5 kg/m
-----------------------------	------------	--

Steel-armoured conduit and single clamp SAS or strap clamp	E30 1.25 m	up to M63, filling factor up to 60 %, length of cable which is not fixed between conduit ends: maximum 1.2 m
--	------------	--

Protective cable duct 60 x 100 mm (Niedax)	E30 50 cm	maximum 16 mm ² ; maximum load: 3,1 kg/m ceiling installation, 7 kg/m wall installation
--	-----------	--



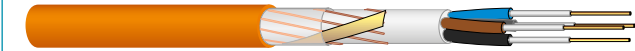
Datwyler Keram (N)HXH FE180 E90 B2_{ca}-s1a,d1,a1 (all dimensions)
STN 92 0205 FIRES-JR-130-22-NURE
ČSN 73 0895 FIRES-JR-131-22-NURE

Datwyler fastener	Classified for horizontal and vertical installation	
	PS 60 / P 60 R	PS 90 / P 90 R
Single clamp	300 mm	300 mm
Strap clamp on c-shaped rail or cable ladder	300 mm	300 mm

Datwyler fastener also in tubes acc. to STN 92 1101-1 7.6	Classified for horizontal and vertical installation	
	PS 60 / P 60 R	PS 90 / P 90 R
Datwyler single clamp type SAS, bundle with up to 3 cables	300 mm	300 mm
Datwyler strap clamp B...D on c-shaped rail, bundle with up to 3 cables	600 mm	300 mm

Datwyler fastener	horizontal vertical E90	According to DIN 4102-12:1998-11 (P-MPA-E-03-043) comment
		Datwyler single clamp type SAS or TSD
Datwyler strap clamp B...D on c-shaped rail	80 cm	
In-wall installation		Cable to be covered with ≥ 15 mm thick layer of mineral plaster, parallel installation of multiple cables

Datwyler fastener	horizontal	According to DIN 4102-12:1998-11 (P-MPA-E-03-043) comment
		Datwyler Hermann clamp S (small)
Datwyler Hermann clamp	80 cm	maximum 6 kg/m (e.g. up to 30 cables 3 x 1.5 mm ²)



Datwyler Keram (N)HXCH FE180 E90 B2_{ca}-s1a,d1,a1 (all dimensions)
STN 92 0205 FIRES-JR-130-22-NURE
ČSN 73 0895 FIRES-JR-131-22-NURE

Standard construction	Classified for horizontal and vertical installation	
	PS 60 / P 60 R	PS 90 / P 90 R
Single clamp type SAS	300 mm	300 mm
Strap clamp on c-shaped rail or cable ladder	300 mm	300 mm on cable ladder only

Datwyler fastener also in tubes acc. to STN 92 1101-1 7.6	Classified for horizontal and vertical installation	
	PS 60 / P 60 R	PS 90 / P 90 R
Datwyler single clamp type SAS, bundle with up to 3 cables	300 mm	300 mm
Datwyler strap clamp B...D on c-shaped rail, bundle with up to 3 cables	300 mm	

Datwyler fastener	Classified for horizontal installation	
	PS 60 / P 60 R	
Datwyler Hermann clamp	1.20 m	6 kg/m

Datwyler fastener	horizontal vertical E90	According to DIN 4102-12:1998-11 (P-MPA-E-03-043) comment
		Datwyler single clamp type SAS or TSD
Strap clamp B...D on c-shaped rail	80 cm	
In-wall installation		Cable to be covered with ≥ 15 mm thick layer of mineral plaster, parallel installation of multiple cables

Datwyler fastener	horizontal	According to DIN 4102-12:1998-11 (P-MPA-E-03-043) comment
		Datwyler Hermann clamp S (small)
Datwyler Hermann clamp	80 cm	maximum 6 kg/m (e.g. up to 30 cables 3 x 1.5 mm ²)