

## CASE STUDY

# BUNTWEBEREI, EISLINGEN: A HOLISTIC EXPERIENCE

Salvia Gebäudetechnik has set up the entire network infrastructure of the “Buntweberei” in Eislingen using products and solutions from Datwyler IT Infra.

Since October 2019 the “Buntweberei” has been taking shape on the former site of the Wurster weaving mill in Eislingen. By July 2022 Salvia Gebäudetechnik wants to create a new venue on this large site covering more than 10,000 square metres in the greater Stuttgart area, a venue designed to combine fun and adventure, health and pleasure, business and networking. Among the enterprises offering visitors a holistic experience are the Industrial Design and Lifestyle Hotel “Loom” with a co-working area and Sky Bar, the historic “Kesselhaus” – an event location –, a pop-up store with a café run by the fashion designer Karo Kauer as well as an exclusive fitness and spa club owned by handball player Michael “Mimi” Kraus.

The builder’s own new head office is also located on the site. With a workforce of 1500 on 25 sites and many years of project experience, Salvia Gebäudetechnik is one of the leading German companies for building projects of all sizes. Its range of services covers the entire technical life cycle of buildings – from the initial feasibility studies

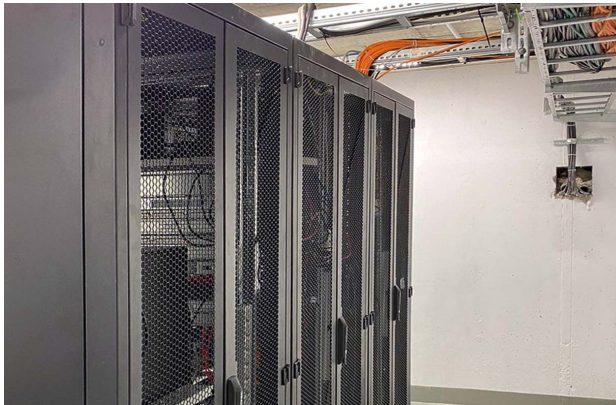


through all the planning phases and execution to the operation of buildings and sites.

Salvia has set up the entire network infrastructure of the “Buntweberei” with products and solutions from Datwyler IT Infra. A key element of this is the campus network, a 10 gigabit backbone of Cat.7<sub>A</sub> type CU 7702 4P copper cable and Cat.6<sub>A</sub> connection technology, which covers all five buildings. Altogether 17 distribution cabinets and over 800 copper data ports were installed on the campus for this purpose.

### Mini Data Centre for central server room

The network infrastructure of the Salvia administration building comprises a server room and six floor distributors which are networked via a fibre optic backbone. At the same time the server room is the central computing node of the “Buntweberei”. A four-rack Mini Data Centre from Datwyler was used here. Each cabinet is equipped with DIMS, the Datwyler Infrastructure Management System. Salvia uses this to monitor access, vi-



bration, temperature, atmospheric humidity and leakage. The system relays any malfunctions to the IT team's service hotline.

### Great flexibility

Spaced throughout the workplace areas of the building are several consolidation points which are connected to the floor distributors by fibre optic breakout cables. Here

Datwyler met Salvia's requirements for measured cut-to-length OM4 multimode trunk cables factory-fitted with connectors, enabling rapid installation.

The access switches are positioned decentrally, directly at the consolidation points, which allows Salvia great flexibility with the workstation cabling. Moreover the entire administration building as well as individual outdoor areas are supplied with WLAN to ensure mobile working conditions.

### Positive experience

"Our experience with Datwyler IT Infra on this project has been nothing but positive," reports Michael Tietz, Head of Information and Communication Technologies at Salvia Gebäudetechnik. "I am talking about product quality, great flexibility, and especially reliability of supply, which is very important in challenging projects such as these."

(August 2022)