

# WUM

## Assembly instructions

### WUM - effective support mount

1. Background Information

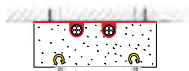
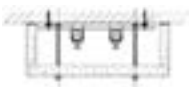
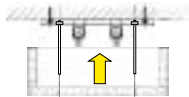
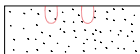
2. By Installation Type

3. By Cable Type

4. Product Range

5. Assembly Instructions

6. FAQ



#### Application

Effective support mount in accordance with DIN 4102-12 for vertical installations of safety cables with integrated functional integrity onto 2970 SLD profile rails. A meander-shaped cable line can be avoided when installing WUM at a spacing of up to 3.5 m.

Riser lines consisting of Datwyler 2970/2 SLD C-rails must be fastened to walls using Datwyler fireproof plugs in accordance with the general test certificates from building authorities.

Datwyler safety cables with integrated functional integrity are fastened onto walls using Datwyler bracket clips of types B to D onto Datwyler 2970/2 SLD C-rails.

The threaded bolts are fastened using sliding nuts onto Datwyler 2970/2 SLD C-rails. Use the same spacing as the holes provided on the WUM.

**(There is only one fastening point for WUM 300 located in the centre)**

Cut cable feedthroughs into the WUM...

... and fill the inside with mineral wool.

Push the WUM onto the threaded bolts...

... and fasten it there using a nut and washer tightened by about 2 turns.

The cable inlets are sealed using mineral wool and Datwyler S100 SM-K fire-stop mastic. The gap between the WUM and the wall is also filled with S100 SM-K fire-stop mastic.