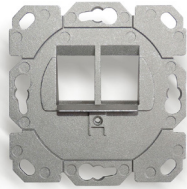


## Mounting bracket 2 x KS

duct mounted & floor boxes

for 2 RJ45 modules with Keystone fitting, compatible with TAE 3-fold design



1 UP-K Faceplate 2x KS-T TAE  
for 2 RJ45 modules with Keystone fitting,  
compatible with all customary TAE  
3-fold central plates design



**2**

2 Application examples

### Descrizione

Modular faceplate for the installation of 2 shielded RJ45 Keystone modules.  
Suitable for the flush and duct mounting and for floor box systems.  
Mounting frame made of zinc die casting (offers possibility for connection to equipotential bonding).  
The snap-in modules are easily fitted into the faceplate.  
The mounting frames can be used together with all customary TAE 3-fold central plates (for multiple designs).

### Applicazione

Suitable for the following Datwyler modules:

- RJ45 module KS-T Plus 1/8 Cat. 6A shielded
- RJ45 module KS-TC Plus Cat.6A (IEC), shielded
- RJ45 module KU Plus 1/8 Cat. 6A unshielded
- RJ45 module KS-T 1/8 Cat. 6/EA shielded
- RJ45 module KS-T 5 1/8 Cat. 5e shielded

### Versioni

Codice art.	Prodotto	Peso [kg]	Unità di imballaggio	GTIN / EAN
18587400ZY	Mounting bracket 2 x KS	0,01 kg	1 pc.	40393910099331

Con riserva di modifiche tecniche

A partire da 2022-05-20 09:35:23