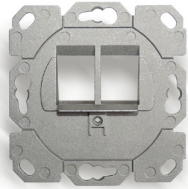


## Mounting bracket 2 x KS

duct mounted & floor boxes

for 2 RJ45 modules with Keystone fitting, compatible with TAE 3-fold design



1 Mounting bracket 2 x KS  
for 2 RJ45 modules with Keystone fitting,  
compatible with all customary TAE  
3-fold central plates design



2 Application examples

### Description

Modular faceplate for the installation of 2 shielded RJ45 Keystone modules.  
Suitable for the flush and duct mounting and for floor box systems.  
Mounting frame made of zinc die casting (offers possibility for connection to equipotential bonding).  
The snap-in modules are easily fitted into the faceplate.  
The mounting frames can be used together with all customary TAE 3-fold central plates (for multiple designs).

### Application

Suitable for the following Datwyler modules:

- RJ45 module KS-T Plus 1/8 Cat. 6A shielded
- RJ45 module KS-TC Plus Cat.6A (IEC), shielded
- RJ45 module KU Plus 1/8 Cat. 6A unshielded
- RJ45 module KS-T 1/8 Cat. 6/EA shielded
- RJ45 module KS-T 5 1/8 Cat. 5e shielded

### Versions

Material number	Product	Weight [kg]	Packing unit	GTIN / EAN
18587400ZY	Mounting bracket 2 x KS	0.01 kg	1 pc.	40393910099331

Subject to technical modification

As of 2022-05-20 09:35:23