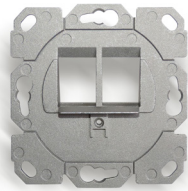


## UP-K Faceplate 2x KS-TC TAE

duct mounted & floor boxes

for 2 RJ45 modules with Keystone fitting, compatible with TAE 3-fold design



2

1 UP-K Faceplate 2x KS-TTAE  
for 2 RJ45 modules with Keystone fitting,  
compatible with all customary TAE  
3-fold central plates design

2 Application examples

### Description

Modular faceplate for the installation of 2 shielded RJ45 Keystone modules.  
Suitable for the flush and duct mounting and for floor box systems.  
Mounting frame made of zinc die casting (offers possibility for connection to equipotential bonding).  
The snap-in modules are easily fitted into the faceplate.  
The mounting frames can be used together with all customary TAE 3-fold central plates (for multiple designs).  
Set including: mounting frame, Central plate, cover frame, 2 white dustcovers for KS-T/TC modular jacks

### Applicazione

Suitable for the following Datwyler modules:  
- RJ45 module KS-T Plus 1/8 Cat. 6A shielded  
- RJ45 module KS-TC Plus Cat.6A (IEC), shielded  
- RJ45 module KU Plus 1/8 Cat. 6A unshielded  
- RJ45 module KS-T 1/8 Cat. 6/EA shielded  
- RJ45 module KS-T 5 1/8 Cat. 5e shielded

### Scope of delivery

Mounting frame, central plate, cover frame (delivery without modules)

### Versions

Numero Materiale	Product	Peso [kg]	Packing unit
18587200ZY	UP-K Anschlussdose 2x KS-T TAE	0,01 kg	1 pc.

Con riserva di modifiche tecniche

A partire da 2021-01-27 11:42:03