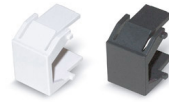


Patch panel KU 24x-sg staggered

for 24 modules KU Plus Cat.6_A

unshielded



Patch panel KU 24x-sg, unshielded

Blank covers, black and white

Description

Unshielded 19"/1U patch panel for up to 24 RJ45 Keystone modules KU Plus 1/8 Cat.6_A (IEC), in accordance with Cat.6_A (UTP).

Snap-in modules can be easily fitted into the patch panel.

The staggered openings are necessary in order to gain maximum head room in terms of Alien Cross Talk (Exogenous Crosstalk, Crosstalk from Channel to Channel) when loaded with unshielded KU Plus 1/8 Cat.6A modules.

Unused ports can be covered with blank covers.

Patch panel made of flame retardant compound, UL94V-0 rated.

Front in grey, similar to RAL 7035, or in black, similar to RAL 9005.

Strain relief with tie wrap.

Delivery without modules.

Applicazione

Suitable for the following Datwyler module:

- RJ45 module KU Plus 1/8 Cat.6A (IEC), unshielded

Proprietà elettriche

EMC unshielded

Versions

Numero Materiale	Product	Dimensioni esterne	Colore	Peso [kg]	Packing unit
418027	Patch panel KU 24x-sg, 19"/1U, for 24x RJ45 Cat.6 _A Keystone module UTP (delivery without modules)	1 U, 44 mm x 482 mm x 94 mm	grigio chiaro	0,48 kg	1 pc.
418028	Patch panel KU 24x-sg, 19"/1U, for 24x RJ45 Cat.6 _A Keystone module UTP (delivery without modules)	1 U, 44 mm x 482 mm x 94 mm	nera	0,48 kg	1 pc.

Con riserva di modifiche tecniche

A partire da 2021-01-27 11:42:13