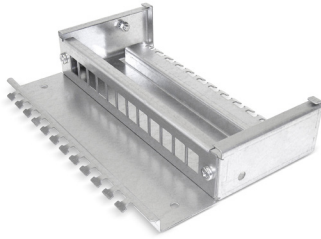


## Consolidation Point box 12 / 24

12 and 24 ports

for one 12-port or 24-port front plate



Box base with mounted 12x MGK front plate (delivery without front plate)



Consolidation Point box, 12 ports, with cover and lock (optional)

### Description

For the termination of data cables in a Consolidation Point (CP), typically installed in raised floors. Box accepts one 12-port or 21-port front plate

Two-part construction with box base and cover, both made of galvanised steel sheet

Snap-in cover, can be opened and completely removed from the box base without any tools

Brush strips on front and rear

Protection rating IP20 Front plate 12x MGK suitable for the following Datwyler modules:

- PS-GG45 7A 4P shielded
- RJ45 module KS-T Plus 1/8 Cat. 6A shielded
- RJ45 module MS-K Plus 1/8 Cat. 6A shielded
- RJ45 module MS-C6A 1/8 Cat. 6A 180°-K shielded
- RJ45 module KS-T 1/8 Cat. 6/EA shielded
- RJ45 module KS-TS 1/8 Cat. 6/EA shielded
- RJ45 module KU-T 1/8 Cat. 6 / Cat. 5e unshielded

### Note

Front plate needs to be ordered separately

### Versions

Material number	Product	Colour	Material	Weight [kg]	Packing unit
417483	Consolidation Point box, 12 ports (delivery without front plate)	silver	sheet steel	1.4 kg	1 pc.
417484	Front plate FP 12x MGK for 12-port CP box	silver	sheet steel	0.13 kg	1 pc.
417489	Consolidation Point box, 24 ports (delivery without front plate)	silver	sheet steel	2.8 kg	1 pc.
417490	Front plate FP 24x MGK for 24-port CP box	silver	sheet steel	0.22 kg	1 pc.
417485	Lock for Consolidation Point box, keyed alike	silver	sheet steel	0.05 kg	1 pc.

Subject to technical modification

As of 2020-12-03 13:12:19