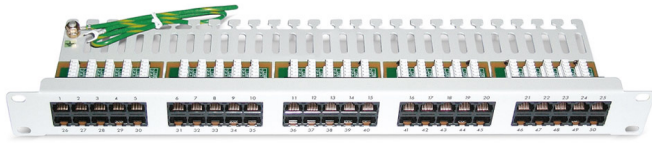


Phone panels CU 50/4

unshielded, loaded with 50 RJ45 jacks, Category 3



Phone panel CU 50/4

Descrizione

Unshielded 19"/1U phone panels for the transmission of digital (ISDN) and analogue voice signals.

Especially suitable for all Class C applications in accordance with EN 50173-1 and ISO/IEC 11801.

The patch panels support cables up to 100 pairs (telephone cables).

A maximum of four wires may be connected to one RJ45 socket. A termination aid is available as an optional accessory. This consists of two angular sheets that can easily be fixed to the frame or cabinet and make the cable termination more comfortable. For more accessories see below.

Proprietà generali

Caricato / Scaricato	Loaded - RJ45 Cat.3
Design	dritto
Numero di porte	50

Proprietà elettriche

Category	3
EMC	unshielded

Proprietà meccaniche

Connection type	LSA
Mounting method	482.6 mm (19 inch) mounting
Screened	No
Type of connector	RJ45 8(8)

Standards

Cat./Class	better than Cat.3
------------	-------------------

Versioni

Codice art.	Prodotto	Dimensioni esterne	Colore	Peso [kg]	Packing unit
418001	Phone panel CU 50/4 with 50x RJ45 jacks, Cat.3	1 U, 44 mm x 482 mm x 129 mm	grigio chiaro	1,42 kg	1 pc.
418003	Phone panel CU 50/4 with 50x RJ45 jacks, Cat.3	1 U, 44 mm x 482 mm x 129 mm	nera	1,42 kg	1 pc.