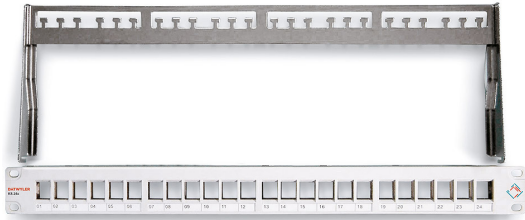
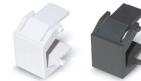


Patch panel KS 24x

for 24 modules with Keystone fitting
shielded



Patch panel KS 24x, shielded



Blank covers, black and white

Description

Shielded 19"/1U patch panel for up to 24 modules with Keystone fitting.

Snap-in modules can be easily fitted into the patch panel.

Unused ports can be covered with blank covers. For the modules PS-GG45 7A Datwyler recommends the patch panel MGK 24x. Front panel made of flame retardant compound, UL94V-0 rated, in combination with stainless steel and a cable strain relief.

Front in grey, similar to RAL 7035, or in black, similar to RAL 9005.

Strain relief with tie wrap. Delivery without modules.

Applicazione

Suitable for the following Datwyler modules:

- RJ45 module KS-T Plus 1/8 Cat.6A shielded
- RJ45 module KS-TC Plus Cat.6A (IEC), shielded
- RJ45 module MS-C6A 1/8 Cat. 6A 180°-K shielded
- RJ45 module KU Plus 1/8 Cat.6A unshielded
- RJ45 module KS-TS 1/8 Cat.6/EA shielded
- RJ45 module KS-T 1/8 Cat.6/EA shielded
- RJ45 module KU-T 1/8 Cat.6 / Cat.5e unshielded

Proprietà elettriche

EMC shielded

Versions

Numero Materiale	Product	Dimensioni esterne	Colore	Peso [kg]	Packing unit
418019	Patch panel KS 24x, 19"/1U, for 24x RJ45 Keystone modules, FTP (delivery without modules)	1 U, 44 mm x 482 mm x 160 mm	nera	0,93 kg	1 pc.
418020	Patch panel KS 24x, 19"/1U, for 24x RJ45 Keystone modules, FTP (delivery without modules)	1 U, 44 mm x 482 mm x 160 mm	grigio chiaro	0,93 kg	1 pc.