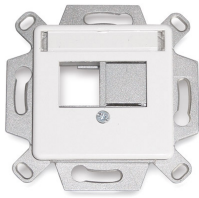


UP Faceplate 2x .

flush mounted

for 2 RJ45 modules, straight outlet



1



2



3

1 2-port faceplate with mounting frame and central plate, without cover frame
 2 Example: Faceplate complete with central plate, cover frame and one module

3 Cover frame 80 x 80 mm

Description

Ideally suitable for flush mounting with lack of space, for instance in a flush mount cup. Mounting frame consists of zinc die casting (offers possibility for connection to equipotential bonding). The snap-in modules are easily fitted into the faceplates. Unused ports are covered with blanking elements (metal) that can be removed. The central plate has a labelling field with transparent cover. The mounting frame can be used together with all customary TAE central plates (for multiple designs). Delivery without modules.

Application

Suitable for the following Datwyler modules:

- RJ45 module MS-K Plus 1/8 Cat.6A shielded
- RJ45 module KS-T Plus 1/8 Cat.6A shielded
- RJ45 module KS-TC Plus Cat.6A (IEC), shielded
- RJ45 module KU Plus 1/8 Cat.6A unshielded
- RJ45 module KS-TS 1/8 Cat.6/EA shielded
- RJ45 module KS-T 1/8 Cat.6/EA shielded
- RJ45 module KU-T 1/8 Cat.6 / Cat.5e unshielded

Versions

Material number	Product	Colour	Weight [kg]	Packing unit
440020	UP Faceplate for 2x RJ45 module, straight (delivery without modules)	pure white	0.04 kg	1 pc.