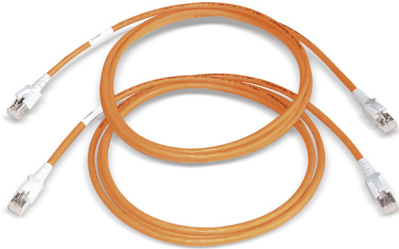


RJ45 measurement cable Cat.6_A (IEC)

500 MHz, shielded

set with 2 pcs.

with serial numbers for documentation



Description

RJ45 measurement cable Cat.6A (IEC) up to 500 MHz, shielded, with serial numbers for documentation (set with 2 pieces). For Channel link acceptance testings of Class D, E and EA cabling. When using test devices with dual measurement capability this cable is also suitable for Permanent Link measurements.

Electrical properties

EMC shielded

Versions

Material number	Product	Outer sheath colour	Length (m)	Weight [kg]	Packing unit
1411063	RJ45 measurement cable Cat.6 _A (IEC)	orange	2	0.1 kg	1 set

Subject to technical modification

As of 2020-12-03 11:26:55