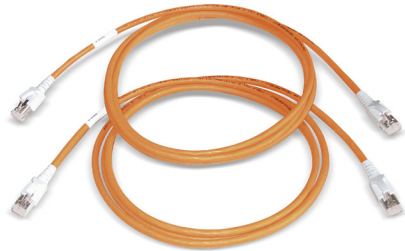


RJ45 measurement cable Cat.6_A (IEC)

500 MHz, shielded

set with 2 pcs.

with serial numbers for documentation



Description

RJ45 measurement cable Cat.6A (IEC) up to 500 MHz, shielded, with serial numbers for documentation (set with 2 pieces). For Channel link acceptance testings of Class D, E and EA cabling. When using test devices with dual measurement capability this cable is also suitable for Permanent Link measurements.

Proprietà elettriche

EMC	shielded
Gbit/s	Up to 10 Gbit/s

Proprietà meccaniche

AWG	24
-----	----

Versions

Numero Materiale	Product	Outer sheath colour	Length (m)	Peso [kg]	Packing unit
1411063	RJ45 measurement cable Cat.6 _A (IEC)	arancia	2	0,1 kg	1 kit

Con riserva di modifiche tecniche

A partire da 2021-03-18 09:31:22